

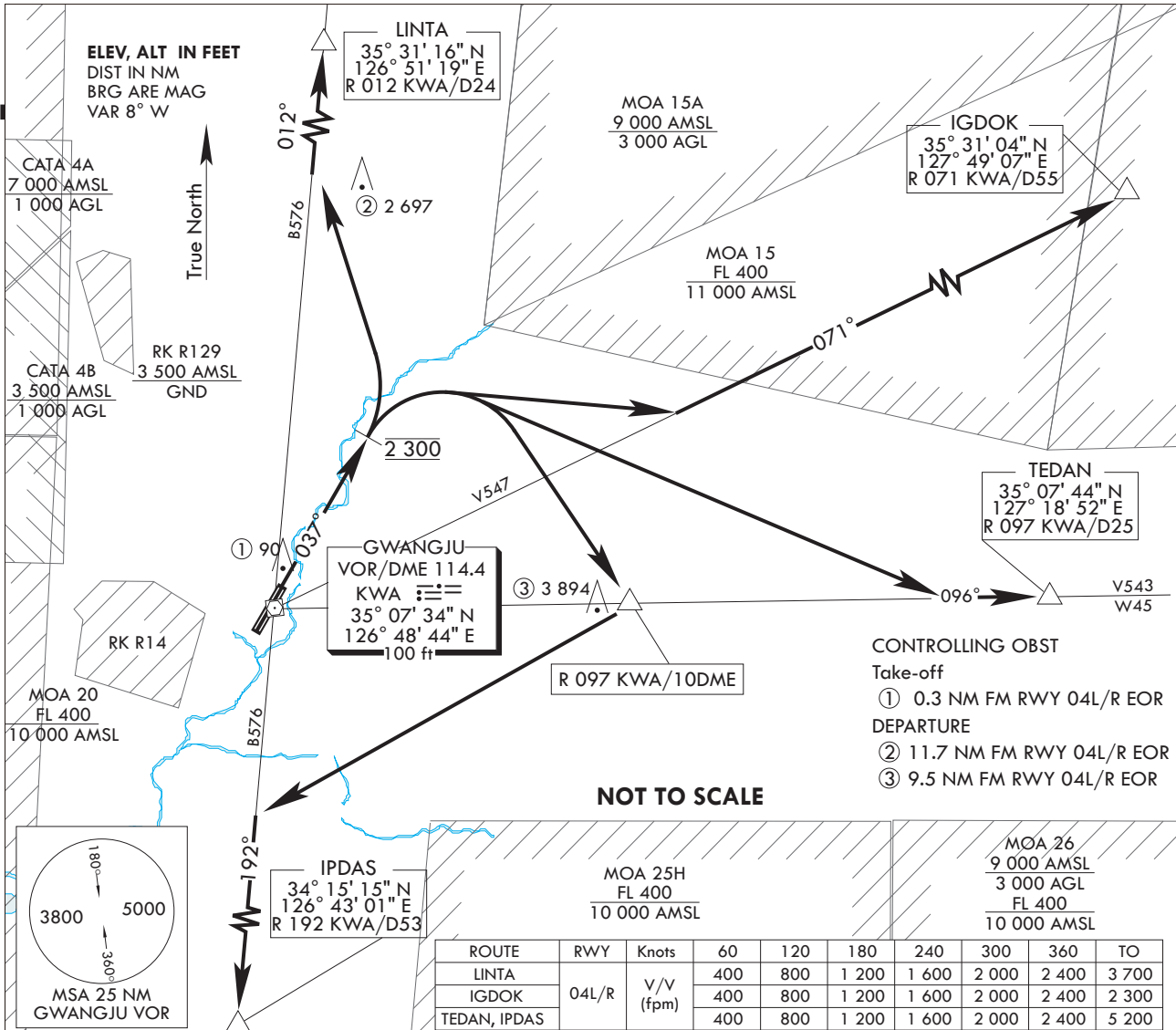
**STANDARD DEPARTURE CHART  
INSTRUMENT (SID)**

TRANSITION ALT 14 000  
TRANSITION LVL FL 140

GWANGJU DEP 124.0  
347.2  
GWANGJU TWR 118.05  
254.6

**GWANGJU/Gwangju(RKJJ)**  
**RWY 04L/R**  
**GWANGJU 1A**

Note : Departure under U.S. TERPS.



**DEPARTURE ROUTE DESCRIPTION**

RWY 4R/L : Climb heading 037° to 2 300 ft, thence...

LINTA transition : left turn intercept R 012 KWA and track outbound.  
then join B576 and climb to assigned or specified altitude.

IGDKOK transition : right turn intercept R 071 KWA and track outbound.  
then join V547 and climb to assigned or specified altitude.

TEDAN transition : right turn intercept R 096 KWA and track outbound.  
then join V543 / W45 and climb to assigned or specified altitude.

IPDAS transition : right turn direct to R 097 KWA 10 DME at or above 5 000 ft.  
then right turn heading 225° until join B576 and climb to assigned or specified altitude.

Change : Information of MAG VAR.

**INTENTIONALLY**

**LEFT**

**BLANK**

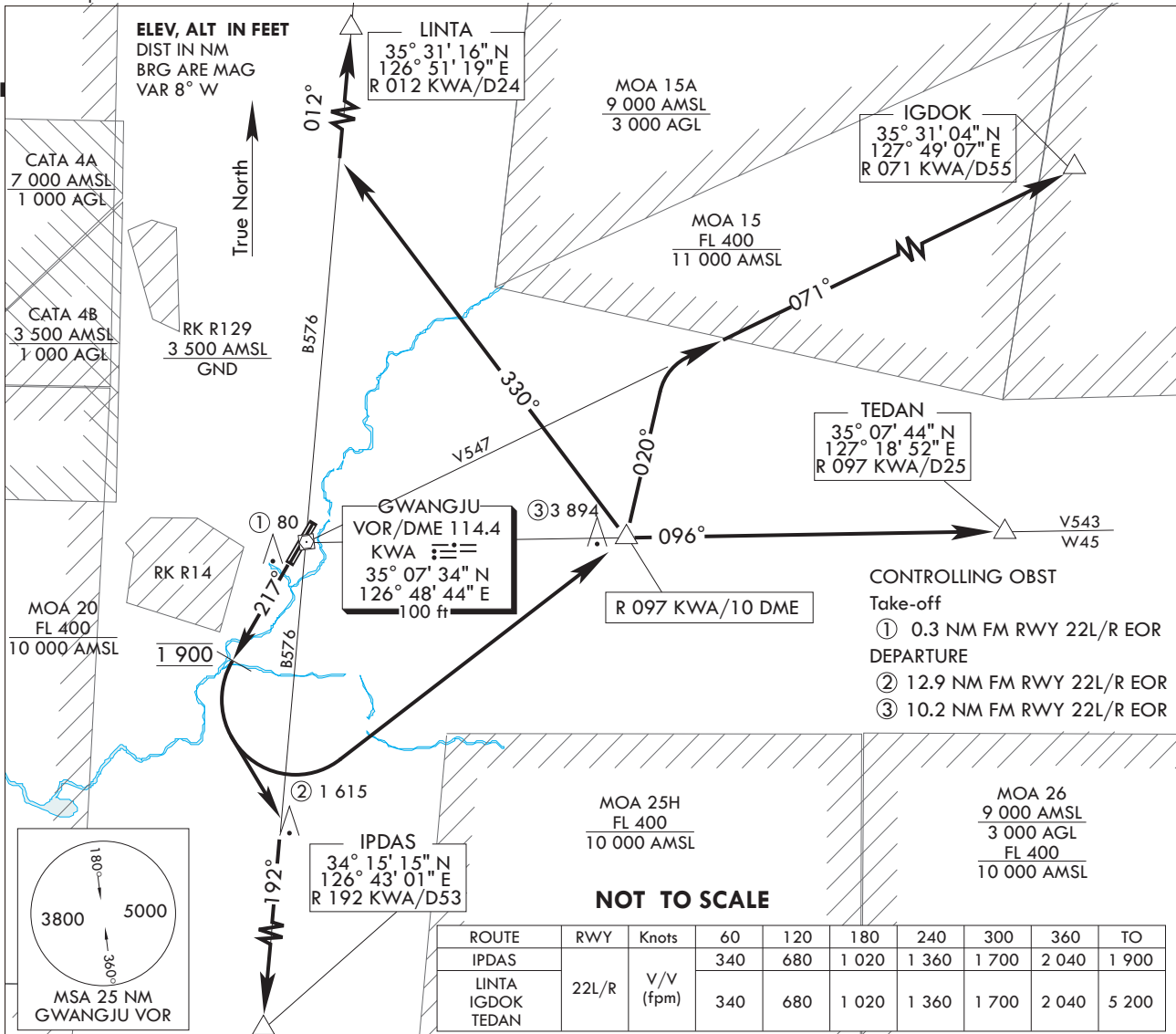
**STANDARD DEPARTURE CHART  
INSTRUMENT (SID)**

TRANSITION ALT 14 000  
TRANSITION LVL FL 140

GWANGJU DEP 124.0  
347.2  
GWANGJU TWR 118.05  
254.6

**GWANGJU/Gwangju(RKJJ)**  
**RWY 22L/R**  
**GWANGJU 2A**

Note : Departure under U.S. TERPS.



**DEPARTURE ROUTE DESCRIPTION**

RWY 22L/R : Climb heading 217 to 1 900 ft, thence....

IPDAS transition : Left turn intercept R 192 KWA and track outbound R 192 KWA or join B576, and climb to assigned or specified altitude.

LINTA transition : Left turn direct to R 097 KWA 10 DME at or above 5 000 ft. Then left turn heading 330 until intercept R 012 KWA. Then track outbound R 012 KWA or join B576, and climb to assigned or specified altitude.

IGDOK transition : Left turn direct to R 097 KWA 10 DME at or above 5 000 ft. Then left turn heading 020 until intercept R 071 KWA. Then track outbound R 071 KWA or join V547, and climb to assigned or specified altitude.

TEDAN transition : Left turn direct to R 097 KWA 10 DME at or above 5 000 ft. Then left turn track outbound R 096 KWA or join V543/W45, and climb to assigned or specified altitude.

Change : Information of MAG VAR.

**INTENTIONALLY**

**LEFT**

**BLANK**

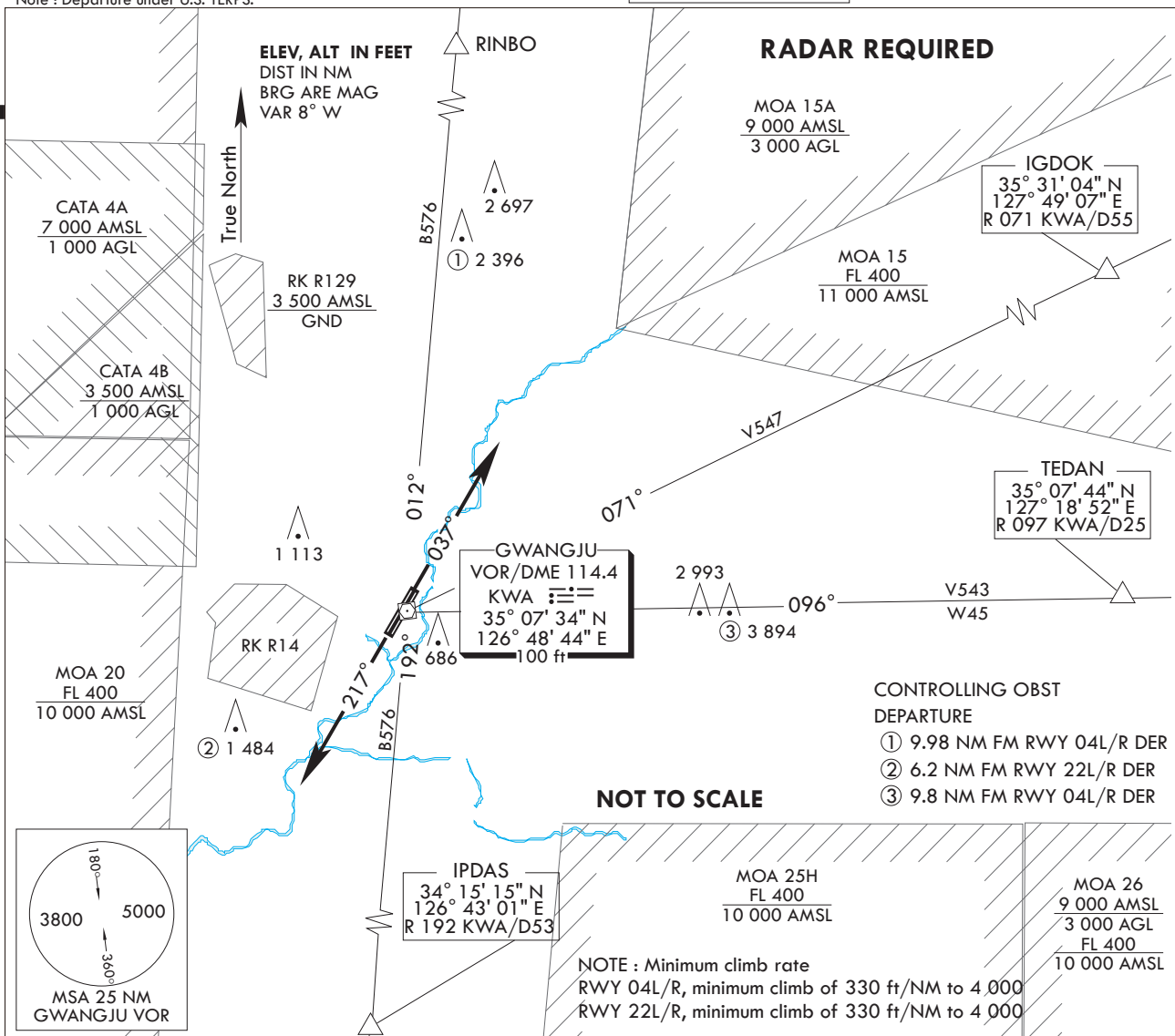
**STANDARD DEPARTURE CHART  
INSTRUMENT (SID)**

TRANSITION ALT 14 000  
TRANSITION LVL FL 140

GWANGJU DEP 124.0  
347.2  
GWANGJU TWR 118.05  
254.6

**GWANGJU/Gwangju(RKJJ)**  
RWY 04L/R, 22 L/R  
**GWANGJU 1D**

Note : Departure under U.S. TERPS.



**DEPARTURE ROUTE DESCRIPTION**

**TAKEOFF RWY 04L/R** : Climb heading 037, Thence.....

**TAKEOFF RWY 22L/R** : Climb heading 217, Thence.....

..... Expect radar vectors to intercept filed Enroute fix or Navaid.  
Maintain 8 000 or assigned altitude(flight level).  
Expect filed altitude/flight level 10 minutes after departure.

**LOST COMMUNICATIONS** : If radio contact is not established with departure control prior to reaching 4 000, Continue climb to 8 000 before turning to filed fix/Navaid and proceed filed route and altitude.

**INTENTIONALLY**

**LEFT**

**BLANK**